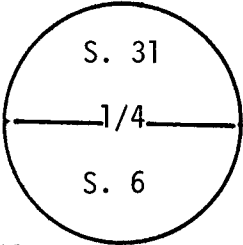


**CERTIFIED LAND CORNER RECORDATION**

R 64 W

DESCRIPTION OF CORNER EVIDENCE FOUND, AND ORIGINAL RECORD (If known)

T  
15  
  
14  
N

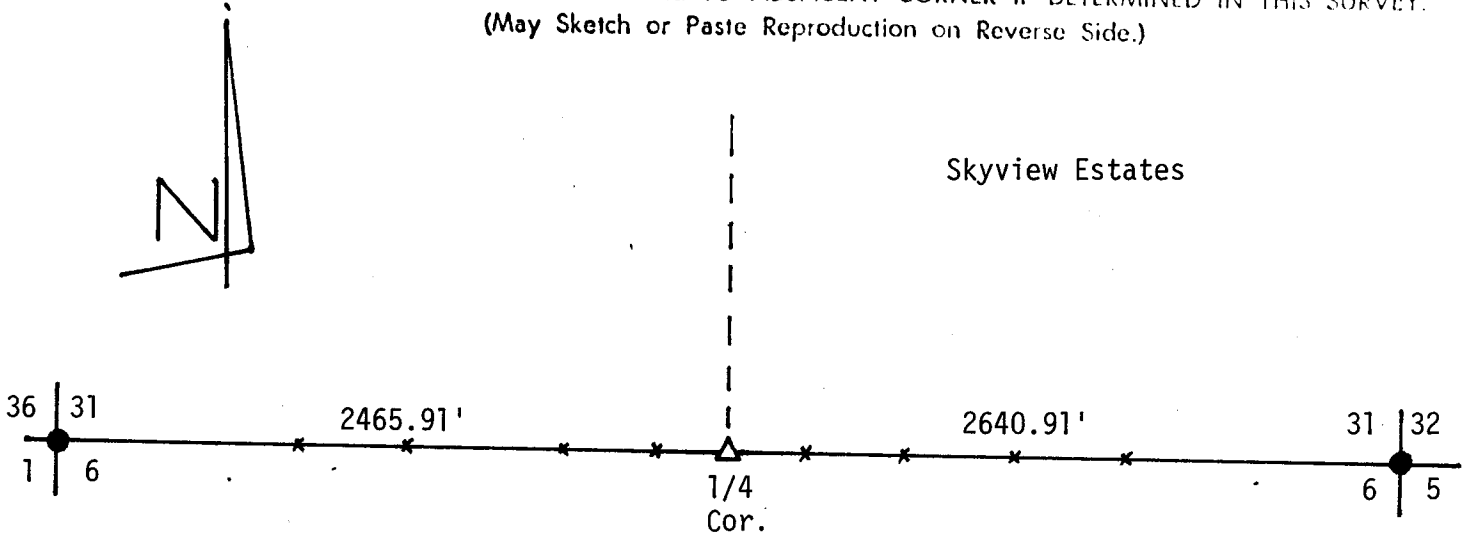


G.L.O.: 16" x 12" x 6" Limestone  
Found: 1/2" Dia. Rebar. S.W. Corner of Skyview Estates

DESCRIPTION OF MONUMENT AND ACCESSORIES ESTABLISHED TO PERPETUATE THE ORIGINAL LOCATION OF THIS CORNER:

1/2" DIA Rebar  
See Ties below

SKETCH, WITH COURSE AND DISTANCE TO ADJACENT CORNER IF DETERMINED IN THIS SURVEY.  
(May Sketch or Paste Reproduction on Reverse Side.)



I, Glen L. Roberts certify that I have carefully performed or reviewed the work done on the diagrammed corner as reported on this recordation form and approve the same.

*Glen L. Roberts*  
Signature of Surveyor

Wyo. P.E. & L.S. 347  
Registration No.

STATE OF WYOMING,  
Office of Clerk and Recorder,  
County of Laramie

**622355**

This "corner record" was filed for record on the \_\_\_\_\_ day of \_\_\_\_\_, 19\_\_\_\_, was noted on the cross-index plat and is assigned page No. A-3, in book No. 14-64.

County Official			
Cross Index No. _____	T. _____	R. _____	Mer. _____
_____	T. _____	R. _____	Mer. _____
_____	T. _____	R. _____	Mer. _____
_____	T. _____	R. _____	Mer. _____
_____	T. _____	R. _____	Mer. _____
_____	T. _____	R. _____	Mer. _____
_____	T. _____	R. _____	Mer. _____

*A3 14-64*